

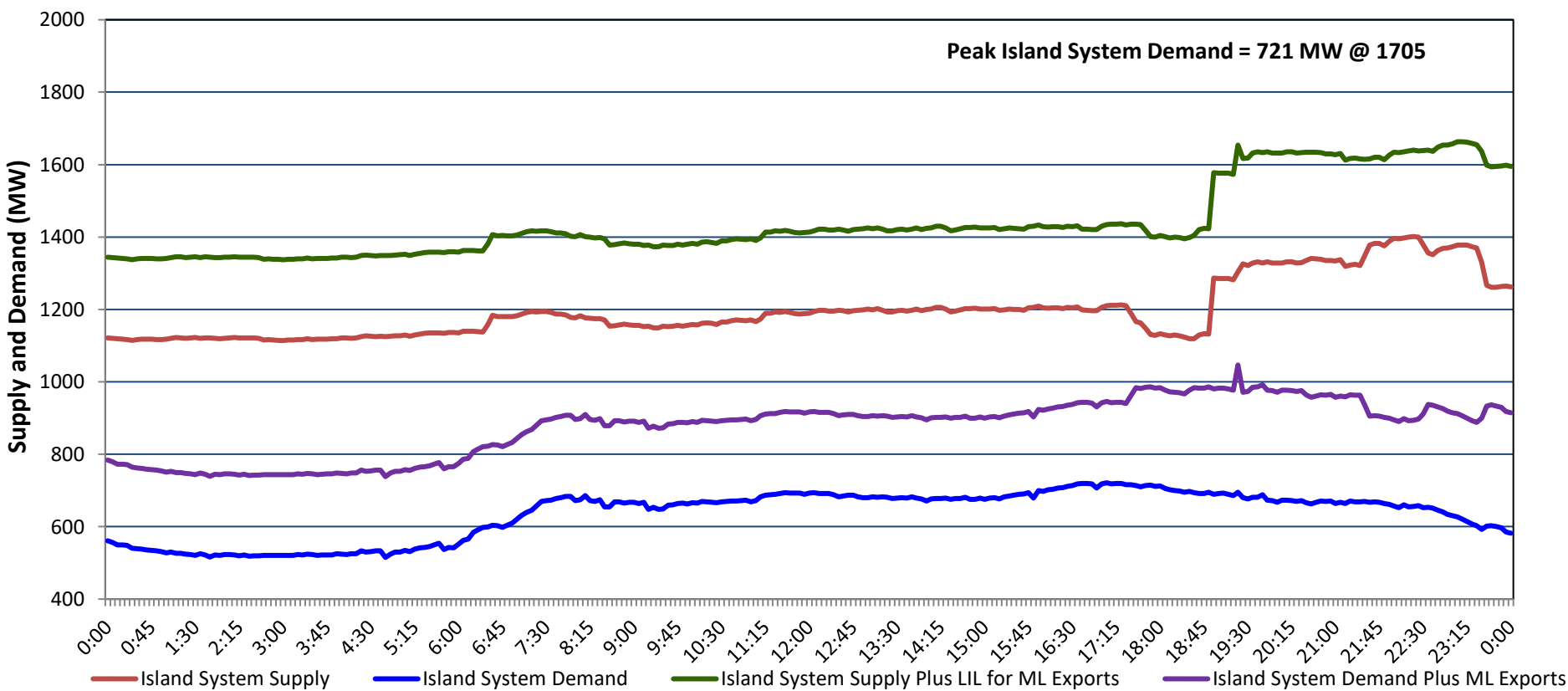
Newfoundland Labrador Hydro (NLH)

Supply and Demand Status Report Filed Wednesday, June 18, 2025

Section 1

Island Interconnected System - Supply, Demand & Exports

Actual 24 Hour System Performance For Tuesday, June 17, 2025



Island Supply Notes For June 17, 2025

- A As of 0800 hours, March 30, 2025, Holyrood Unit 3 unavailable due to planned outage 130 MW (150 MW).
- B As of 0823 hours, March 31, 2025, Bay d'Espoir Unit 1 unavailable due to planned outage (76.5 MW).
- C As of 0823 hours, March 31, 2025, Bay d'Espoir Unit 2 unavailable due to planned outage (76.5 MW).
- D As of 0800 hours, May 04, 2025, Holyrood Unit 1 unavailable due to planned outage (170 MW).
- E As of 0851 hours, May 05, 2025, Hardwoods Gas Turbine unavailable due to planned outage (50 MW).
- F As of 1538 hours, May 16, 2025, Holyrood Diesels available at 8 MW due to forced derating (10 MW).
- G As of 1126 hours, June 04, 2025, St. Anthony Diesel Plant available at 6.7 MW due to forced derating (9.7 MW).
- H As of 0800 hours, June 08, 2025, Holyrood Unit 2 unavailable due to planned outage 115 MW (170 MW).
- I As of 1336 hours, June 15, 2025, Granite Canal Unit unavailable due to planned outage (40 MW).
- J At 1138 hours, June 17, 2025, Hawkes Bay Diesel Plant available at full capacity (5 MW).
- K At 1852 hours, June 17, 2025, Bay d'Espoir Unit 3 available (76.5 MW).
- L At 1852 hours, June 17, 2025, Bay d'Espoir Unit 4 available (76.5 MW).

Section 2

Island Interconnected System - Supply, Demand & Outlook

Wed, Jun 18, 2025	Island System Outlook ²	Seven-Day Forecast	Island System Daily Peak Demand (MW)	
			Forecast ⁸	Adjusted ⁶
Island System Supply: ⁴ NLH Island Generation: ^{3,7} NLH Island Power Purchases: ⁵ NP and CBPP Owned Generation: LIL/ML Net Imports to Island: ⁹	1,250 MW 955 MW 85 MW 200 MW 10 MW	Wednesday, June 18, 2025	755	705
		Thursday, June 19, 2025	725	675
		Friday, June 20, 2025	750	700
		Saturday, June 21, 2025	740	690
		Sunday, June 22, 2025	815	765
		Monday, June 23, 2025	790	740
7-Day Island Peak Demand Forecast:	815 MW	Tuesday, June 24, 2025	755	705

Island Supply Notes For June 18, 2025

- Notes:
1. Generation outages for running and corrective maintenance are included. These are not unusual for power system operations. They generally do not impact customer supply. Hydro schedules outages to system equipment whenever possible to coincide with periods when customer demands are low and sufficient supply reserves are available. However, from time to time equipment outages are necessary and reserves may be impacted.
2. As of 0800 Hours.
3. Gross continuous unit output.
4. Gross output from all Island sources (including Note 3).
5. NLH Island Power Purchases include: ML Imports, Exploits Generation, Rattle Brook, Star Lake, Wind Generation and capacity assistance (when applicable).
6. Adjusted for interruptible load and the impact of voltage reduction when applicable.
7. Due to limitations inherent in the design of combustion turbines, the output of combustion turbines may be reduced in the event that ambient temperatures exceed the threshold required for full rated output. This threshold is dependent on the design of each turbine.
8. Does not include ML Exports.
9. LIL Import sunk in the Island System. Actual LIL flows will be restricted by various system conditions including, but not limited to, Island Load, ML Exports and Avalon Unit status.

Section 3

Island Peak Demand and Exports Information

Previous Day Actual Peak and Current Day Forecast Peak

Tue, Jun 17, 2025	Island Peak Demand ¹⁰	17:05	721 MW
	Exports at Peak		224 MW
	LIL Net Imports to Island		1,533 MWh
Wed, Jun 18, 2025	Forecast Island Peak Demand		755 MW

- Notes:
10. Island Demand is supplied by NLH generation and purchases, LIL Imports plus generation owned and operated by Newfoundland Power and Corner Brook Pulp & Paper (Deer Lake Power, DLP).